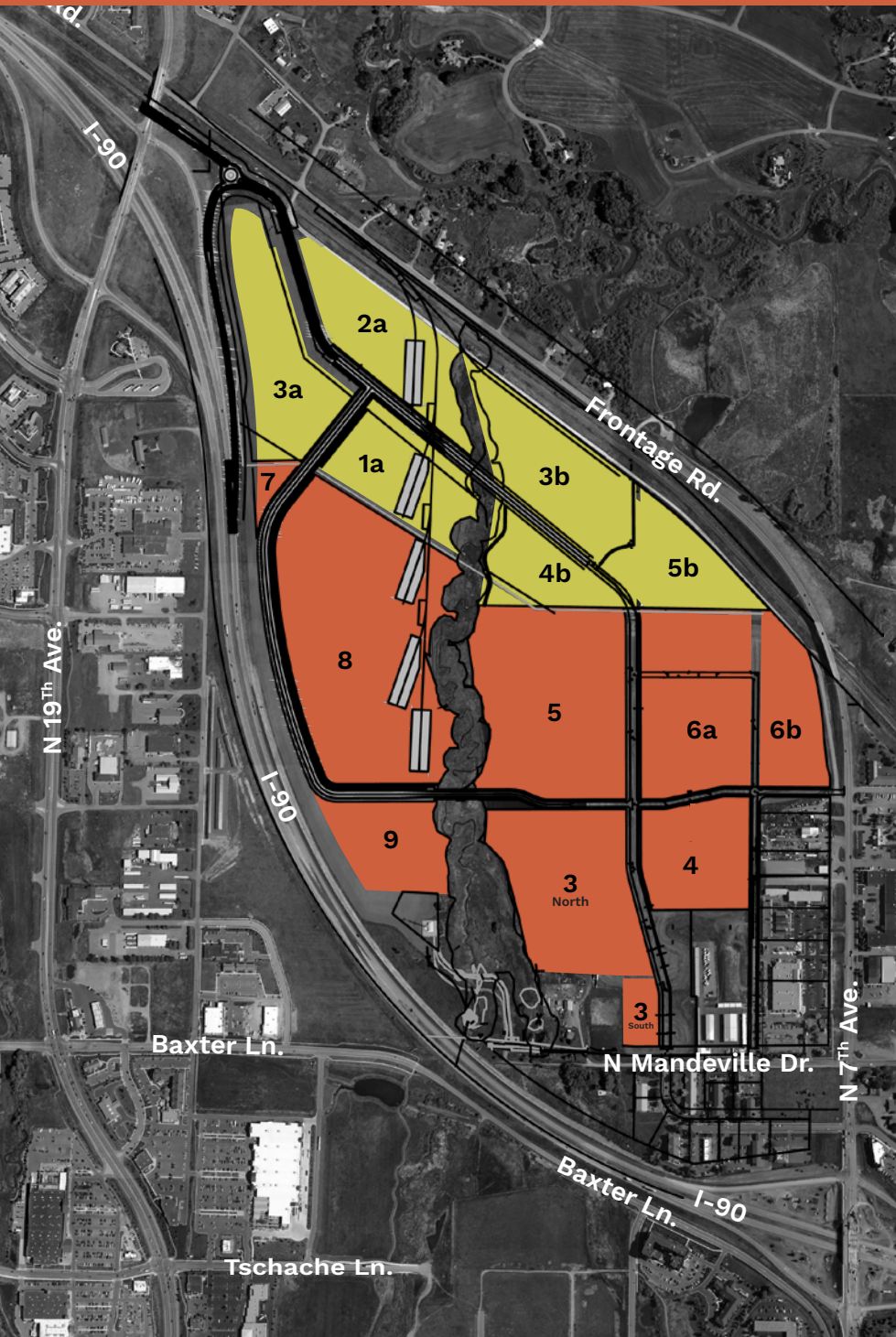




NORTH LOOP INDUSTRIAL PARK

Master Site Plan | 250 Acres



PHASE 1:

- 3b: SOLD - 12.30 acres
- 4b: SOLD - 6.04 acres
- 5b: SOLD - 8.06 acres
- 3 North: 18.44 Acres, Zoning M1
Proposed Modular Housing Mfg.
- 3 South: SOLD 2.2 Acres, Zoning M1
ECHO Extended Stay Hotel
- 4: 8.95 Acres, Zoning M1
Proposed 544 Unit Modular Workforce
Housing Community
- 5: 23.07 Acres, Zoning M1
Proposed Class A Warehouse Distribution
287,000 square feet
- 6a: 13.59 Acres, Zoning M1
Proposed Small-bay Flex Industrial
76,000 square feet
- 6b: Available - 7.36 Acres, Zoning M1
Hard Corner of North 7th Ave.

PHASE 2:

- 1a: Available - 10.41 acres, Zoned M2
Rail-served Industrial
- 2a: Available - 12.53 acres, Zoned M2
Rail-served Industrial
- 3a: Available - 13.17 acres, Zoned M2
Frontage on I-90
- 7: Available - 1.35 acres, Zoned M2
Frontage on I-90
- 8: Available - 38.83 acres, Zoned M2
Rail-served Industrial
- 9: Available - 8.29 acres, Zoned M2
Frontage on I-90



**NORTH
LOOP**
BOZEMAN, MT



YORK Developments
yorkdevelopments.com

Casey Tippens
Development Director
406.624.7815